

Limora Zentrallager
 Industriepark Nord 21
 D- 53567 Buchholz
 Tel: 49 (0) 2683-97990
 E-Mail: Limora@Limora.com
 Internet: www.Limora.com

Filialen:
 • Aachen • Berlin • Bielefeld
 • Düsseldorf • Hamburg
 • Köln • Stuttgart

Rear suspension fitting instructions

Special Tools Required

- Spot Weld Drill
- 5/16 Drill
- 8.5mm Drill
- 12mm Drill
- 16mm Drill
- Angle Finder

Disconnect battery first, Remove rear seat and boot carpet. Jack up vehicle on a level ground. Highly recommended that you remove fuel tank. Remove rear axle, old shockers and torque arms. **IMPORTANT** Fuel pipe may need to be moved and re-routed. Clean off paint, under seal, wax, etc. On cross member (see fig1) Weld in upper base bracket. (see fig2) Drill out spot welds on re-enforcing washer where the shocker mounts on body. (see fig3) Drill out hole to 16mm. (see fig4) Using re-enforcing plate and 16mm bolt, bolt into place. Using a 8.5mm drill, Drill hole and repeat on other side.

(see fig5) Highly recommended that you remove old leaf spring mount and pan hard rod mounting bracket. You can now stone chip, paint, wax oil, etc the area.

Important Brake pipes may need to be moved and re-route.

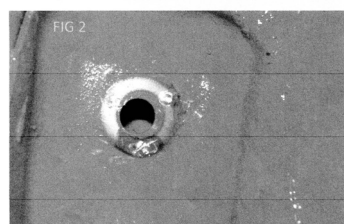
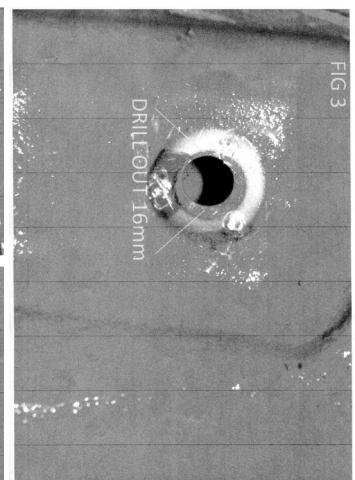
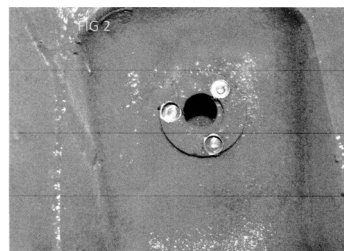
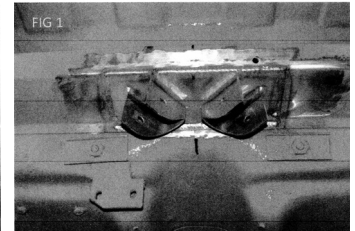
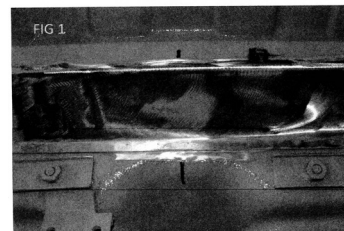
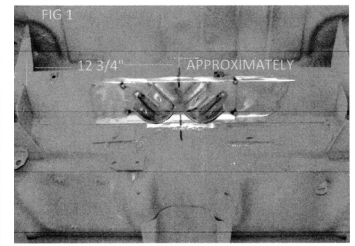
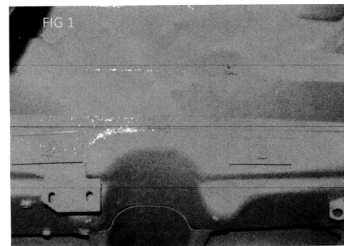
(see fig6) Remove pan hard rod bracket on axle, clean off axle for new brackets. (see fig6a) Using the re-enforcing plate and 16mm bolt, bolt into place on the axle and drill 8.5mm. The original torque brackets on axle need to be drilled out to 12mm.

(see fig7) Fit spacer tube between original axle bracket and new bracket. Now you are ready to weld them on the axle. Remove and fit new torque bushes in original torque arm. Fit arms as in (fig8). Axle can now be fitted, torque etc. Don't fit upper A frame arm to body at this point. (see fig 8a) Measure lower arms, drill 5/16 holes and fit bracket. Fit lower arms to axle. (see fig9).

Fit adjustable platforms. Re-fit wheels and apply hand brake before lowering down.

Centralize axle, now you can adjust and fit upper A frame arms. Set diff angle to 0-4 Degrees nose down. (see fig10). Use lower arm to adjust angle. Bleed brakes, hand brake cable, prop shaft, fuel tank, exhaust, check axle oil level.

The new adjustable platforms shocks have been factory set. Springs have a pre-load of 20mm. Damper has setting from - 0 to + 18 Dampers are set at + 4 clicks from 0



Limora Zentrallager
 Industriepark Nord 21
 D- 53567 Buchholz
 Tel: 49 (0) 26 83- 97 99 0
 E-Mail: Limora@Limora.com
 Internet: www.Limora.com

Filialen:
 • Aachen • Berlin • Bielefeld
 • Düsseldorf • Hamburg
 • Köln • Stuttgart

